



Dear colleagues,

In a few days, we will meet in Bariloche for the IAL IPA joint meeting 2022. Here there is the latest information for all planning to attend the congress. Stay tuned to our social media!

Final Sessions

- FS1 Lake outburst floods (LOFs): characteristics, imprints and risks
- FS2 Lacustrine records of geological and hydrological hazards
- FS5 Molecular applications and perspectives on modern and Quaternary environmental systems
- FS6 Varves records: from tracking natural and anthropogenically induced changes of the environment and climate to improving chronologies of past events
- FS7 Beyond just research data: The value of outreach, education, equality, diversity and inclusion around lakes
- FS8+22 Lacustrine archives of southern South America: Reconstructing the challenges of the living and non living worlds throughout the Quaternary
- FS10 The challenge of public communication of science in Limnology & Paleolimnology
- FS12 Lake biodiversity changes through time and space
- FS13 Linking the past and the present of Pampean shallow lakes to infer the future
- FS15 Subaqueous mass wasting in natural and artificial lakes: triggers, development and impacts
- FS16 Sensitive high-altitude aquatic ecosystems on mountains and plateaux
- FS17 Linking Land and Water: Paleolimnological Reconstructions connecting Land Use with Limnological Change
- FS18 Integrating process models into paleolimnological methods : Toward hindcast-forecast approaches to assess evolution of lake-watershed systems
- FS19 Degradation and restoration of deltas, wetlands, and floodplain lakes and ponds in the Anthropocene
- FS21 Lakes as archives of the Anthropocene
- FS23 2Kyr Lacustrine proxies of southern South America: understanding climate and anthropogenic impacts
- FS24 Paleolimnology of high-latitude lakes: sensitive archives of past environmental change
- FS26 Arctic lakes: Archives of Quaternary paleoclimate, paleoglaciology, and paleoecology
- FS28 Proglacial lakes
- FS29 Human Traces in the aquatic sedimentary record
- FS30 Using Palaeolimnology to Understand Recent Human Impacts on Tropical Lakes
- FS31 Rapid environmental change in tropical and subtropical lakes during the Holocene
- FS32 Environmental records of the Anthropocene in artificial lakes
- FS34 Paleoenvironment and paleoclimate records from long-lived lakes and paleolakes
- FS35 Ancient Lake Basins
- GS1 Tectonic and volcanic large lakes
- GS2 Present-day lacustrine systems
- GS5 Big Data, AI and the lake record



Scientific Program

It is envisioned to provide the final program on a Conference app, which will be available to download for free in Google Play and App Store and will allow users to compile their own personalized program. Likewise, the final program will be uploaded in pdf on the Conference website.

Steps to download app (1) go to Google Play or App Store); (2) look for Guivent app; (3) download the app; (4) open the app and click in the event IAL IPA 2022 (5) register in the event creating an user and password.

The event will be available in the app a few days before the meeting.

Below, you can find the compacted program:

Sunday 27 Nov	Monday 28 Nov			Tuesday 29 Nov			Wednesday 30 Nov			Thursday 1 Dec			Friday 2 Dic
	Palace	Master	Zona	Palace	Master	Zona	Palace	Mater	Zona	Palace	Master	Zona	
10:00-13:00 Registration	08:30-10:00 Opening Ceremony			8:30-10:15 FS2 FS23 FS17 FS15			8:30-10:15 FS21 FS19 FS6			8:30-9:45 FS5 FS18 FS30			F I E L D P O S T E R S E R I E S
15:30-20:00	10:00-11:00 Plenary talk			10:15-10:45 Coffee Break			10:15-10:45 Coffee Break			9:45-10:15 Coffee Break			
19:00-21:00	11:00-11:30 Coffee Break			FS15 FS24 FS17			FS6			FS5 FS28 FS26			
I P A C O N F E R E N C E B Y R E A K I N G	FS31 FS13 FS29			12:00-13:00 Plenary talk			11:15-12:00 Plenary talk			11:30-12:30 Plenary talk			
	13:00-14:00 Lunch			13:00-14:00 Lunch			12:00-13:30 Award Ceremony			12:30-13:30 Lunch			
	FS16 FS12 FS34			FS1 FS24 FS32			13:30-14:30 Lunch			13:30-14:30 Plenary talk			
	15:45-16:15 Coffee Break			15:30-16:00 Coffee Break			14:30 Social Activities			FS7 FS10			
	FS16 FS12 FS34			FS22 & FS8 FS24 GS 1,3,5						15:45-16:15 Coffee Break			
	18:00-20:00 Poster session			18:00-20:00 Poster session						FS7 T5 FS10 T5			
										18:00-19:00 Closing Ceremony			
										20:00-24:00 Gala Dinner			

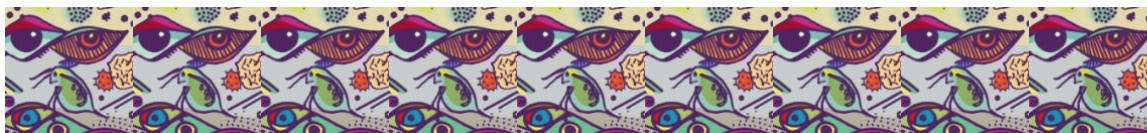
*Rooms: Palace, Master and Zona

Social Program

Last minute changes: The Ice breaker on 27 November and the Gala dinner on 1st December, both will be held at BEC, Bariloche Events and Congresses.

Mid Conference social activities: All of them are free of charge for participants. Don't forget to book your favorite one! Detailed information can be found in our website <https://www.ial-ipa2022.com/social-events/>

One-day field trips: There are still places available for visiting selected areas of the Nahuel Huapi National Park in the heart of Patagonian. All of them are scheduled for **Friday, 2nd December**. Attendants can choose to visit the Tronador glacier or selecting the Limnological-Botanical excursion visiting the seven most important lakes in the area. Detailed information and link for inscription is available on our website <https://www.ial-ipa2022.com/post-conference-field-trips/>. The registration for field trips can be done on site up to Wednesday 30th and/or according to available places.



On-site practical information

How to reach the venue: from the airport by taxi or bus (line 72), you can find the timetable here https://moovitapp.com/index/es-419/transporte_p%C3%BAblico-line-72-San_Carlos_de_Bariloche-5155-1073052-658074-0

To book a taxi in advance, contact Barlan travel ialipa2022.barlantravel@gmail.com

Currency and cash points: Currency in Argentina is the Argentinean peso. There is an exchange bureau located in downtown Bariloche however, we suggest to exchange currency in Ezeiza-Buenos Aires International Airport because it has better rates. All shops accept debit and credit cards and many shops accept US dollars and euros at the exchange rate in force on the date of the purchase. Try to avoid ATM ! the withdrawal commission can get up to 10 US Dollars and bad exchange rates

Electricity and plugs: In Argentina the power plugs and sockets are of type C and I. The standard voltage is 220 V and the standard frequency is 50 Hz. Plug type C is the plug which has two round pins and plug type I is the plug which has three flat pins in a triangular pattern.

Travel insurance: All participants must have insurance which includes basic health coverage, personal liability coverage and accident coverage.

Sustainability: this Conference is committed to doing activities in a sustainable and socially as well as environmentally responsible way. In this sense we implement reducing paper and plastic usage: No printed program book, no plastic containers for drinks and/or food and badge made with recycling materials. We recommend to bring your personal bottle for drinks.



Information for presenters

Oral presentations: must be maximum 15 min (12 minutes + 3 min open question). During November, all presenters will receive a message with detailed information of how to present at the Congress, including an upload link and, eventually, scheduled time slots during the Conference

Posters will be displayed in rooms MASTER and PALACE on Monday 28 and Tuesday 29 from 6 to 8 pm. Posters cannot exceed 80 cm wide x 120 cm long. For those people who prefer to print the poster in Bariloche, please contact el Centro del Copiado Bariloche: info@centrodelcopiado.com

We look forward to seeing you in Bariloche in an exciting and constructive Conference!

